

Student Drop off and Pick up Routes at Berney

All parents transporting their students to and from school shall use the student drop off and pick up zones on Pleasant Ave. (in the front of the school) and on School Ave. (on the east side of the school).

Child care vans will use the student drop off zone in front of the school.

All school busses will use the school bus loop on the west side of the building.

The west parking lot entrance is now an “enter only” lot for staff and visitor parking. When you are ready to leave campus, please use the new one way exit loop that run parallel to the bus lane.

The gym parking lot is reserved for staff parking during school hours and shall not be used as a pick up/drop off zone.

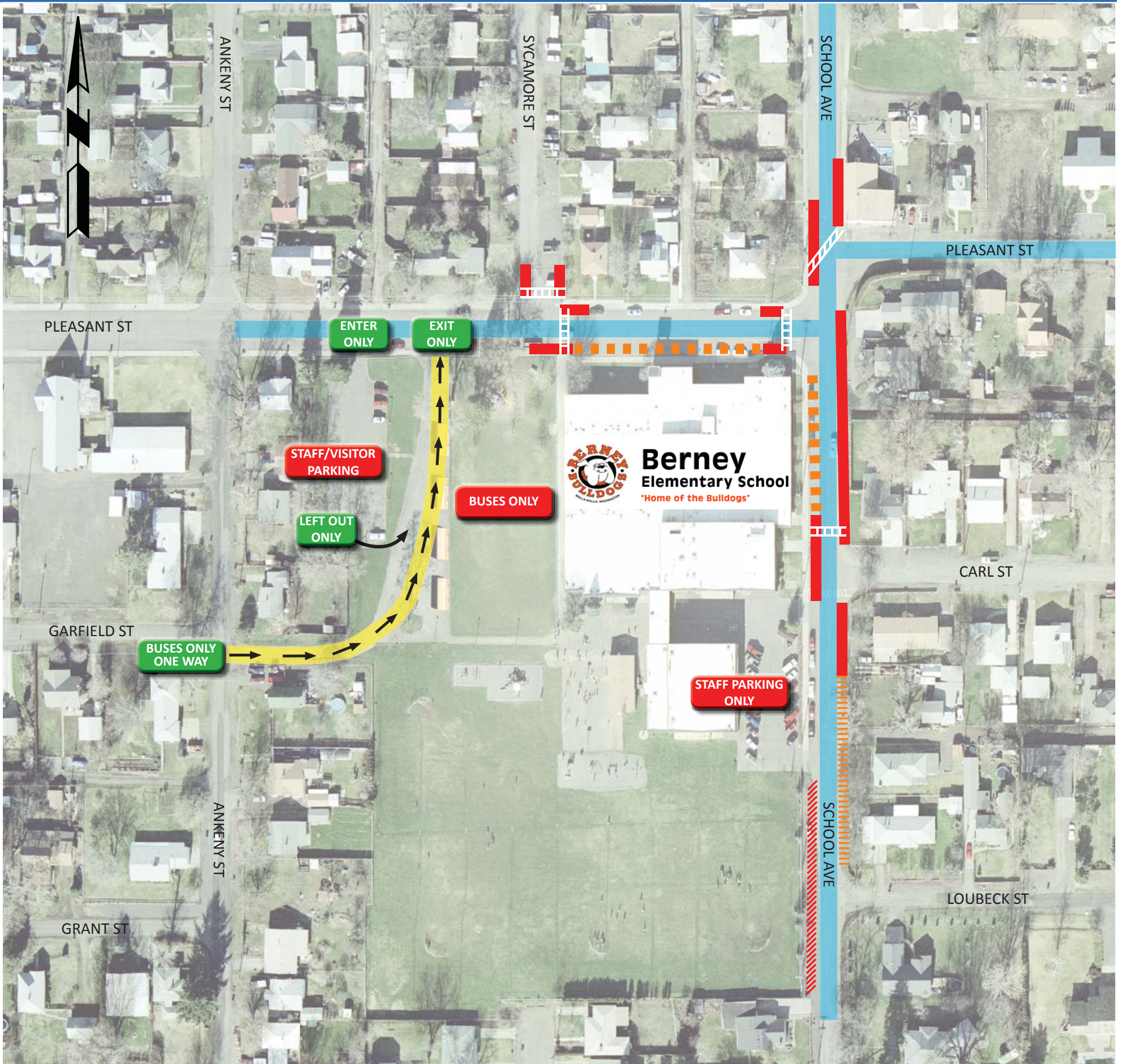
The bus lane/car exit area is reserved for busses only and is not to be used to pick up or drop off students. It shall not be used as a drive through lane for private vehicles.

Overflow/Event parking is on School Ave. adjacent to the ball fields.







Berney Elementary School

SCHOOL ZONE PLAN

April 25, 2012



LEGEND

-  NO PARKING
-  SPECIAL EVENT/OVERFLOW PARKING
-  NO PARKING DURING SCHOOL HOURS (MON-FRI 7:30 AM - 3:30 PM)
-  NO PARKING - STUDENT DROP-OFF/PICK-UP ZONE
-  SCHOOL ZONE 20 MPH (MON-FRI 7:30 AM - 4:30 PM)
-  BUSES ONLY

PARKING RESTRICTIONS PER RCW 46.61.570

"IT'S THE LAW!"

NO PARKING/STOPPING/STANDING IN SPECIFIED LOCATIONS:

- WITHIN 5' OF DRIVEWAYS.
- WITHIN 15' OF FIRE HYDRANTS.
- WITHIN 20' OF CROSSWALKS.
- WITHIN 30' OF STOP SIGNS.
- AS DESIGNATED BY SIGNAGE.